

Exhibitions for 2016

Exploring Stuff - Our Lives with Objects

7 February to 4 December 2016: Discovering the relationships we have with things through Bexhill Museum's extraordinary collection of objects.

This exhibition explores why objects are important to us, and uncovers the many roles they play. Bexhill Museum's unique and varied collections are used to reveal how objects enhance our sense of wellbeing, and add meaning to our lives.

As part of the 'Exploring Stuff Project' funded by Arts Council England, this community project discovers how our lives are affected by the things that surround us. Local residents living with dementia and Bexhill College students participated in explorative artist-led workshops. Their innovative responses to objects are also displayed within the exhibition.



A film accompanies the 'Exploring Stuff Project' a community arts project at Bexhill Museum, East Sussex, discovering how our lives are affected by the things that surround us. Click on the green picture to watch.



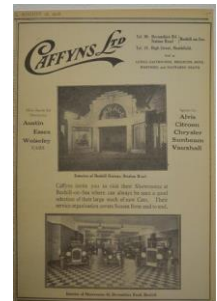
Supported using public funding by
**ARTS COUNCIL
ENGLAND**



Bexhill Garages

A new photo exhibition in Bexhill Museum casts fresh light on half-forgotten businesses and long-defunct makes: 1 February to 4 December 2016

IN the days before a series of amalgamations reduced the British motor industry to a shadow of its former self, Bexhillians were spoiled for choice when it came to motor dealers and car marques.



The exhibition fills one wall of the corridor between the museum's Sargent and Costume and Social History galleries. But gaps remain in the photographic record, gaps that it is hoped that museum supporters might be able to fill.

Something Old, Something New

Wedding Dresses from 1857 to 2007: 1 February to 4 December 2016

This exhibition showcases the museum's exquisite collection of wedding dresses, and reveals fascinating stories about the brides who wore these dresses on their special day.

The wedding dresses date from 1857 up to the present day; including Victorian, Edwardian, 1920s, 1940s and a 21st century Gothic example. Many of these dresses come with their own personal effects; such as shoes, veils, headdresses, petticoats, hats, sprays, love letters, house-keeping books and photographs.

Most of the women who got married in these dresses had connections to Bexhill. Wedding dresses reflect the communities and cultures that created and preserved them. We hope you enjoy this sumptuous collection.

