



Trains, Trains and a Traction Engine

As generous as ever with his time, actor and comedian Eddie Izzard gave a tremendous boost to the Museum's recent model railway display weekend. Fresh from performances in Kiev and Sofia, our patron devoted the better part of two days to supporting the event which had been master minded by members of the Bexhill Model Railway Club.

Since its unveiling last year, the Izzard family model rail layout in the Museum's Technology Gallery has proved a major attraction. The original Triang 00 gauge layout was built for Eddie and his brother Mark by their father, John.

Visitors young and old were able to enjoy a variety of club layouts in scales ranging from 2mm N gauge to generous 7mm 0 gauge, with attractions in each of the three galleries plus the Education Room. Outside in the park, Polegate Engineering Club member, Tom Pettitt was offering rides in the sunshine on the trailer behind his third-scale 1910 Burrell traction engine. Two and a half years of work went into assembling the replica.

Among the many visitors was Rufus Butcher, four, whose family had travelled from Sittingbourne, Kent, but they were far from the furthest-travelled. Kent and Peggy Cross, from San Diego, California, saw an event in Newcastle, heard about the Izzard family model railway in Bexhill and then discovered that an event was planned at Bexhill Museum. Model railways in San Diego, it seems, are on circular tracks. They had never seen layouts where trains went to and fro—and were impressed.

After two busy days Ken Bywater, Bexhill Model Railway Club member, Museum volunteer and event organizer, said, "I think it has gone far better than we expected – far, far better."



**DIARY DATES****COFFEE MORNING**

Museum Education Room
4 May, 10-11.30am

POP-UP COFFEE SHOP

Museum Education Room
6 May, 2-5pm

OUTING Fishbourne Roman
Palace and Gardens, West
Sussex
9 May

BOOK SALE

Museum Education Room
13 May, 11-1pm

GUIDED WALK "Stepping Out
into Egerton Park and
Polegrove"

Museum Education Room
14 May, 2pm

GUIDED WALK "Stepping Out
for a Family Ramble in the
Highwoods"

31 May, 10.30am

COFFEE MORNING

Museum Education Room
1 June, 10-11.30am

**CHILDREN'S ARTS AND CRAFTS
ACTIVITY**

1 June, 2-4pm

POP-UP COFFEE SHOP

Museum Education Room
3 June, 2-5pm

GUIDED WALK "Stepping Out
around Bexhill Cemetery"

11 June, 2pm

STRAWBERRY CREAM TEA

Museum Education Room
24 June, 1-3pm

OUTING Romney, Hythe and
Dymchurch Railway
29 June

POP-UP COFFEE SHOP

Museum Education Room
1 July, 2-5pm

GUIDED WALK "People
connected with Bexhill Manor"

2 July, 2pm

COFFEE MORNING

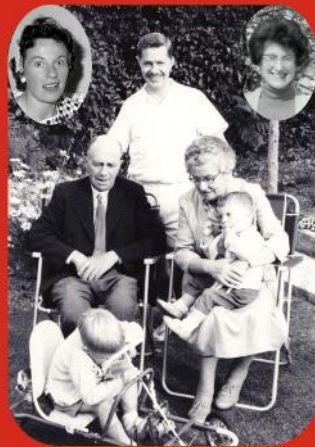
Museum Education Room
6 July, 10-11.30am

GUIDED WALK "Stepping Out
Around Crowhurst"

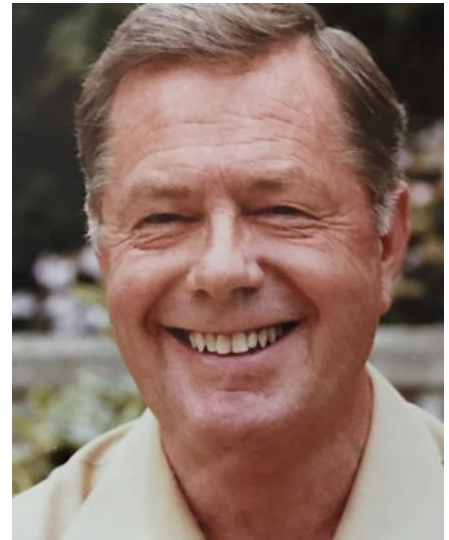
26 July, 2pm

Izzard

A Bexhill Family Journey



by Harold John M Izzard



Izzard A Bexhill Family Story

Bexhill Museum is proud to announce the publication of John Izzard's autobiography - *Izzard A Bexhill Family Story*. A pillar of the local community and Bexhill Museum member of longstanding, John is also the father of our esteemed patron Eddie Izzard.

Born in 1928, John Izzard moved to Sidley in Bexhill, Sussex in 1935 and was present at the opening of the world famous De La Warr Pavilion. For the first time the fascinating Izzard family story is revealed in detail - spanning the whole world but always returning home to Bexhill-on-Sea.

This book follows John Izzard's childhood in Sidley, his wartime experiences, time in the Navy and successful career with BP through to his retirement and work in the voluntary sector.

This substantial book is 223 pages long and is illustrated throughout. It will be available from Bexhill Museum's shop at £10.



German students visiting the Museum in early April. Aged around 13, they spent a happy hour doing a quiz on objects to be found within the Sargent Gallery.



People Object Place
Exploring Migration in the Region



Bexhill Museum has received a grant from the Heritage Lottery Fund (HLF) for an exciting new project, People Object Place, taking place in the Bexhill and Hastings area. Led by students from the local community, the project focuses on the heritage of migration in the region and the contributions made to the local area, and considers contemporary topics of migration today.

Students of Art and Design from Bexhill 6th Form College and Sussex Coast College Hastings will be working with Bexhill Museum, Hastings Museum and Art Gallery and the De La Warr Pavilion, exploring the heritage of migration in the area through archived material and artefacts which date back to 80AD. The students will curate three innovative exhibition displays at each cultural venue, exhibiting the heritage uncovered by the project alongside contemporary artworks responding to migration.

Bexhill Museum strives to be a valued cultural and educational resource for all and is proud to be working with other organisations in the area with this shared belief. The People Object Place project aims to identify and raise awareness of the rich and varied heritage arising from the migration of people.



LOTTERY FUNDED



People Object Place
Exploring Migration in the Region

Photos and objects from the Museum's collection top left, Bexhill beach in 1905; top right, Colonnade Deck c 1911. Bottom left, Romano-Celtic head; centre, Saxo-Norman jug; bottom right, gold cigarette case donated by HH Rajmata Gayatri Devi of Jaipur.



Stepping Out

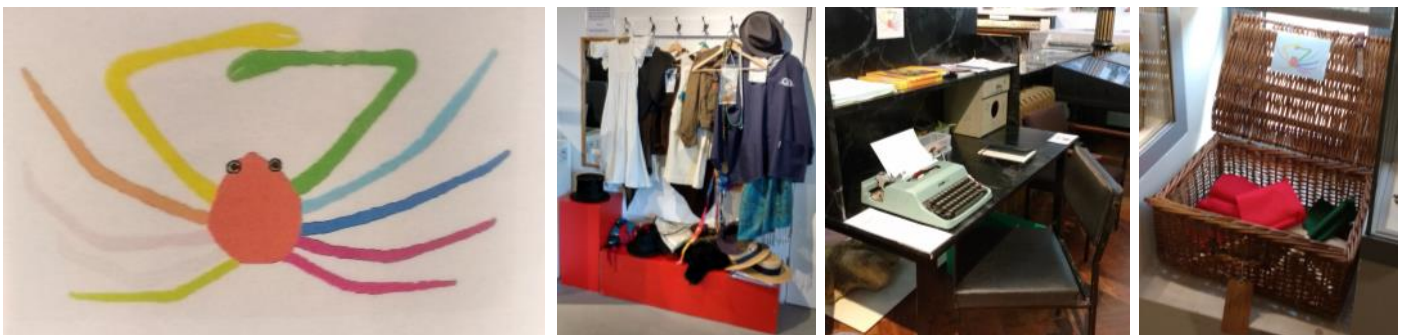


The 2017 *Stepping Out* series of guided walks began on 26 March in lovely weather with a walk exploring the Bexhill West railway branch line between Bexhill and Sidley. It started from the Eras of Style antiques centre in Terminus Road (the old Bexhill West Railway Station) and went up as far as the new road bridge at Woodsgate Park.

Future expeditions will include Dave Hatherell leading a walk through Egerton Park and the Polegrove on 14 May and on 31 May a family ramble in the Highwoods led by Alan Dengate.

The summer programme is to be published shortly and will feature the ever popular Amsterdam walk and a tour of Bexhill Cemetery. All *Stepping Out* details are available in a leaflet available from the Museum.

Fun Zones



Designated by a picture of our giant crab, four special areas have been set up in the Museum where children are encouraged to touch, use, try on and interact with exhibits. There are railwaymen's flags in the Motoring Gallery and clothes to try on in the Costume Gallery. In the Sargent Gallery there is a traveller's trunk to unpack and, most popular of all, a small desk with a portable typewriter—used to today's touch screens, young visitors appear fascinated by yesterday's manual technology.



"To inspire people of all ages and promote learning and enjoyment among all Bexhill residents as well as visitors by encouraging discovery"

Bexhill Museum
Egerton Road
Bexhill-on-Sea
East Sussex
TN39 3HL



Phone: 01424 222058
Email: enquiries@bexhillmuseum.co.uk
www.bexhillmuseum.co.uk

Registered charity no. 1102638